



RECP #: 752646

RECORDED 5/8/2019 AT 1:10 PM BK# 2620 PG# 1688
Debra K. Lee, CLERK OF LARAMIE COUNTY, WY PAGE 1 OF 1

STATE OF WYOMING CORNER RECORD

(In compliance with the CORNER PERPETUATION AND FILING ACT, Wyoming Statutes, 1997 Section 33-29-140, et. seq., and the Rules and Regulations of the Board of Registrations for Professional Engineers and Professional Land Surveyors)

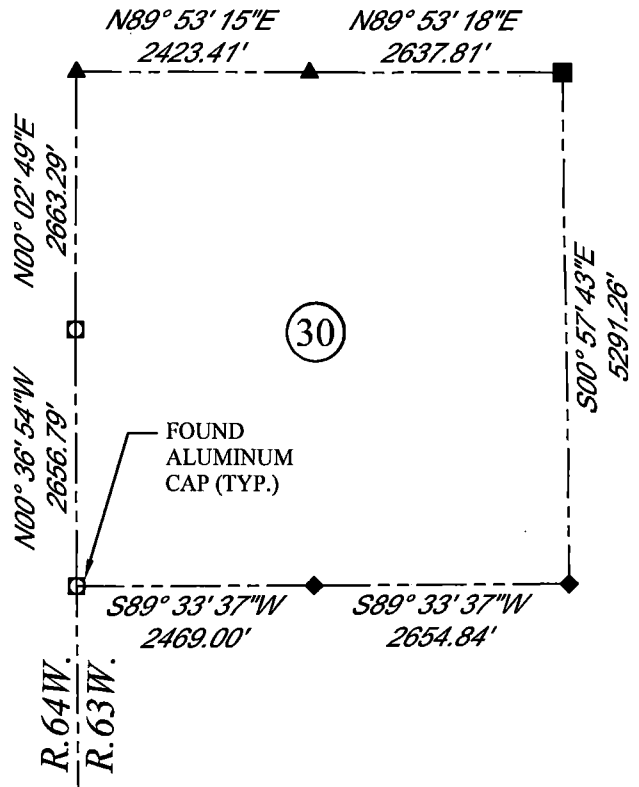
SOUTHEAST CORNER SECTION 25, T. 18 N., R. 64 W., 6TH P.M., LARAMIE COUNTY, WYOMING

GLO: SET A SANDSTONE 20X12X4, 15 IN. DEEP, WITH ONE MARK ON THE SOUTH AND 5 ON THE NORTH EDGE FOR CORNER TO SECTIONS 25, 30, 31, 36.

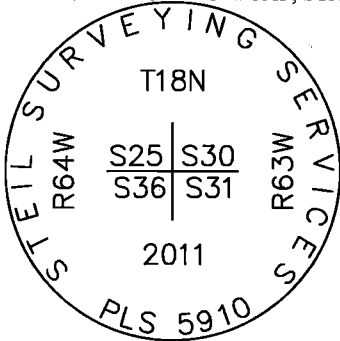
FOUND: 3.25" A.C. 0.1' ABOVE SURFACE, MARKED AS SHOWN. A STEEL POST IS ON THE GROUND ON THE EAST SIDE OF THE CORNER



SCALE: 1" = 2000'
NORTH DETERMINED BY
G.P.S OBSERVATIONS



FOUND 3.25" ALUMINUM CAP, STAMPED AS SHOWN



LEGEND:

- FOUND BLM CAP
- FOUND USFS CAP
- FOUND STONE
- FOUND PRIVATE MONUMENT
- ◆ CALCULATED POSITION
- ▲ SET MONUMENT (LS10245)
- SECTION LINE

DATE OF FIELD WORK: 8/23/2018 OFFICE REFERENCE: MERIDEN

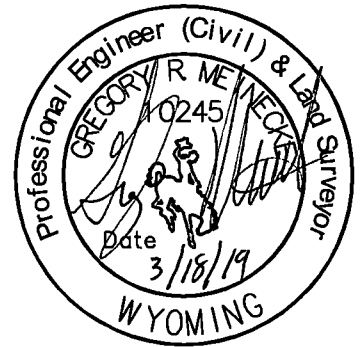
CROSS INDEX DIAGRAM

	1	2	3	4	5	6	7	8	9	10	11	12	13	14	15	16	17	18	19	20	21	22	23	24	25	
A																										
B																										
C		6																								
D			5																							
E				4																						
F					3																					
G						2																				
H							1																			
I																										
J																										
K																										
L																										
M																										
N																										
O																										
P																										
Q																										
R																										
S																										
T																										
U																										
V																										
W																										
X																										
Y																										
Z																										
	1	2	3	4	5	6	7	8	9	10	11	12	13	14	15	16	17	18	19	20	21	22	23	24	25	

WOOD
2615 AVIATION DRIVE
SHERIDAN, WY 82801
PH: 307-675-6400

THIS CORNER RECORD WAS
PREPARED BY ME OR UNDER
MY DIRECTION AND
SUPERVISION,
SEAL AND SIGNATURE

wood.



CORNER NAME: SOUTHEAST SECTION: 25 T. 18 N., R. 64 W. ; 6TH P.M. CROSS-INDEX # V-25
SBRPELS/PLSW: MARCH 1994; PLSW JANUARY 1998